

Safety Instructions

Innrain 80-82 CCB

Aim

General overview about the safety-related guidelines concerning this facility.

This „**general**“ briefing does not replace the workplace specific instructions given by the laboratoy head



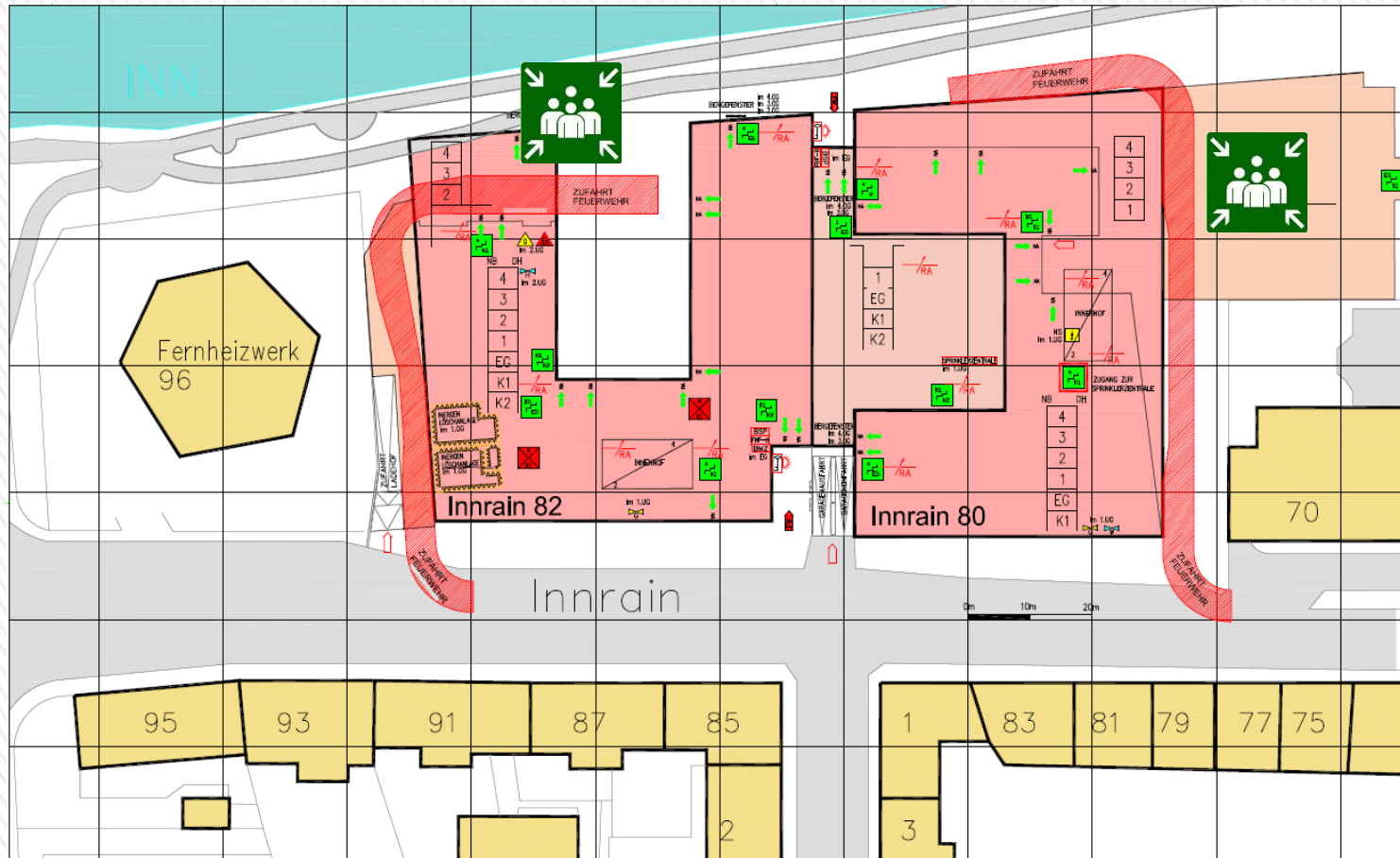
Fire Alarm System



- Alarm caused in the general part and/or the staircases of this building – both Universities (MUI/LFUI) will be alarmed and have to evacuate immediately
- Alarm caused by any of the fire alarm button will alarm this part of the building in which the alarm is caused. (MUI/LFUI)
- Alarm caused in a room/laboratory of either University (MUI/LFUI) will result in an alarm call on the corresponding floor. If it is necessary the push button indicator needs to be pressed
- Each alarm call will automatically reach the on-call duty for emergency
- In case of an „out-of-control“ situation only use the pushbutton alarm indicator which leads to an alarm call in the whole building (e.g. heavy spilling of chemicals)



Provided Assembly Points

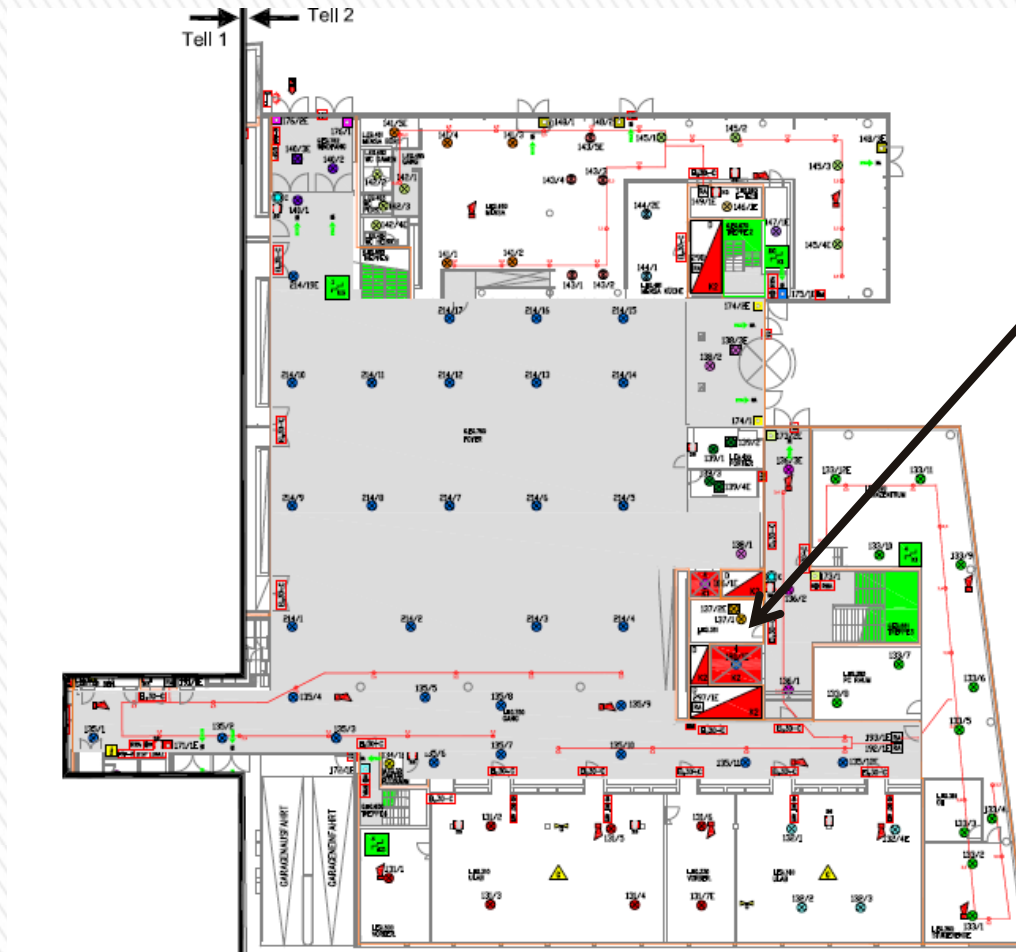


Fire safety relevant information

- Fire sprinkling systems are installed in the whole building, in the basement garage including foaming agent
- In case of a Carbonmonoxide alarm in the basement garage, please leave immediately and do NOT reenter
- A special CO₂ fire-extinguishing system exists in the serverroom
- Nightlabs are equipped with an additional fire-fighting system
- Removal of water from the water hydrant will result in an alarm call - due to pressure loss
- Course leaders have to instruct students appropriately regarding emergency exits and have to provide „first-aid“ in the student laboratory.
- **AND NEVER FORGET: Do not use the elevator in case of fire!**



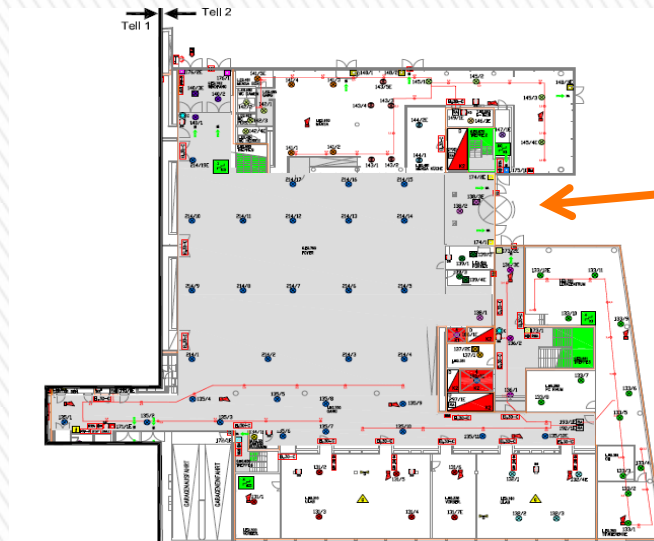
Location of the First-aid room/ Heart defibrillator



Handicapped-Accessibility

The handicapped-accessible entrance/main entrance including the information point is located to the right just around the corner of entrance Innrain 80-82. (not handicapped-accessible) It can however be reached via a ramp.

The main entrance was built in accordance with the Austrian standard 1600 (Handicapped-accessible Manufacture) and B 1602/Schools- and Training Schools. A revolving door opens upon ringing a bell (during daytime) next to the main entrance (roundabout-door)



Handicapped-Accessibility

By means of tactile floor labeling people will be lead from the outer area to the inner area of the building. First to the Main information point and then to the passenger elevator. Both passenger elevators are in accordance with the Austrian standard 1602.

The handicapped-accessible bath rooms are equipped appropriately and usable by means of a Eurokey.

In case of questions regarding this special key, handicapped-accessible lockers, handicapped-accessible parking lots a.s.o. please report to the person responsible for handicapped-related matters.



More safety information concerning Innrain 80-82 CCB

- Smoking is strictly prohibited in the whole building
- The use of scooters, roller skating and skateboarding is strictly prohibited in the whole building – high danger of accident
- Each laboratory is equipped with a gas and emergency power-off switch
- Emergency power supplied outlets are partly provided for extremely sensitive experiments



Technical on-call duty

MUI **+43 (0)676/ 8716 72200**

LFU **+43 (0)676/ 8725 50000**



Transportation of liquid nitrogen via elevator

- No people are allowed to be present in the elevator when transporting dangerous substances, coldliquified gases and dry ice – danger of suffocation
- Elevators are equipped with so-called priority keys (ask Mrs. Pia Müller, MUI)
- At the target location (different floor) delivery has to be secured by a second person



Ventilation of the Rooms



- **Air conditioning only works when doors are closed completely!**
- Windows cannot be opened, therefore all handling with chemicals has to be carried out under the running fume hood
- In case chemicals are spilled (dropping of bottle), turn on the hood, close the door and alarm on-call duty or fire department



Power Supply – Relevance of Colours



Regular power outlet (e.g. Coffe machine, microwave)



Power outlet for computing (e.g. PC, Monitor, printer)



Emergency power supply. In case of a power blackout these outlets will again be supplied within seconds. (e.g. refrigerator)



USV =uninterruptible power supply. In case of a power blackout these outlets will be supplied with power without any interruption. (e.g. equipment for long-term experiments)



Evaluation of the laboratory

Registration of all used working materials (classification) including all used working appliance (e.g. scientific device, personal protective equipment, alarm units) has to take place in accordance with the law in each lab.

To ensure proper handling in the laboratory, all safety data sheets of all used working materials have to be electronically accessible at any time. The sections concerning the proper handling in case of „first-aid“ steps have to be present printed on paper, accessible at any time and **NEED** to be effectively communicated to the Laboratory users.



Maternity protection

Evaluation of Maternity protection: performed by the safety engineer

For the safety of both the mother and child it is indispensable to immediately report the pregnancy to the people in charge.

The list of dangerous substances (e.g. cancer-causing, radioactiv) and the dangerous substances (e.g. X-ray, laser) should be checked to the people in charge.



The GHS-System

- Aims -

- Global standardized Classification and Labeling of substances and compounds
- Trading facilitations in the global merchandise traffic
- Additional improvement concerning work safety, health-, environment- and customer safety as well as transportation safety
- Coordination regarding the transportation guidelines for dangerous material



Danger Pictograms



GHS01
Exploding Bomb
explosive substances



GHS02
Flame
inflammable liquid



GHS03
Flame above a circle
oxidizing solid matter



GHS04
Gasbottle
Gases under pressure



GHS05
Burning
• Skinburning, Cat.: 1
• Corrosiv for metals, Cat.:1



GHS06
Skull with crossbones
• Acute Toxicity, Cat.: 1 - 3



GHS07
Exclamation Mark
• Acute Toxicity, Cat.: 4
• Skin irritating, Cat.: 2



GHS09
Environment
• Danger to water

Danger pictograms

Health Hazard



Respiratory sensitization, category 1

Germ cell mutagenicity, categories 1A,1B,2

Carcinogenicity, categories 1A,1B,2

Reproductive toxicity, categories 1A,1B,2

Specific Target Organ Toxicity – Single exposure, categories 1,2

Specific Target Organ Toxicity – Repeated exposure, categories 1,2

Aspiration Hazard, category 1

News at a glance



H-statements
hazard statements
Gefahrenhinweise

P-statements
precaution statements
Sicherheitshinweise

Signalling Words
Pictogram will be complemented by
two possible signalling words:
„Gefahr“ oder „Achtung“ („Danger“
or „precaution“)

The (Material) Safety Data sheet

2. HAZARDS IDENTIFICATION

Classification of the substance or mixture

According to Regulation (EC) No1272/2008

Flammable liquids (Category 2)

Acute toxicity, Inhalation (Category 4)

Acute toxicity, Dermal (Category 4)

Acute toxicity, Oral (Category 4)

Serious eye damage/eye irritation (Category 2)

According to European Directive 67/548/EEC as amended.

Highly flammable. Harmful by inhalation, in contact with skin and if swallowed. Irritating to eyes.

Label elements

Pictogram



Signal word

Danger

Hazard statement(s)

H225

Highly flammable liquid and vapour.

H302

Harmful if swallowed.

H312

Harmful in contact with skin.

H319

Causes serious eye irritation.

H332

Harmful if inhaled.

Precautionary statement(s)

P210

Keep away from heat/sparks/open flames/hot surfaces. - No smoking.

P280

Wear protective gloves/protective clothing/eye protection/face protection.

P303 + P361 + P353

IF ON SKIN (or hair): Remove/Take off immediately all contaminated clothing.

Rinse skin with water/shower.

Hazard symbol(s)

F

Highly flammable

Xn

Harmful

R-phrases(s)

R11

Highly flammable.

R20/21/22

Harmful by inhalation, in contact with skin and if swallowed.

R36

Irritating to eyes.

S-phrases(s)

S16

Keep away from sources of ignition - No smoking.

S36/37

Wear suitable protective clothing and gloves.

Thank you for your attention

**For further information please visit my website:
http://www.i-med.ac.at/stst_sicherheit/**

