

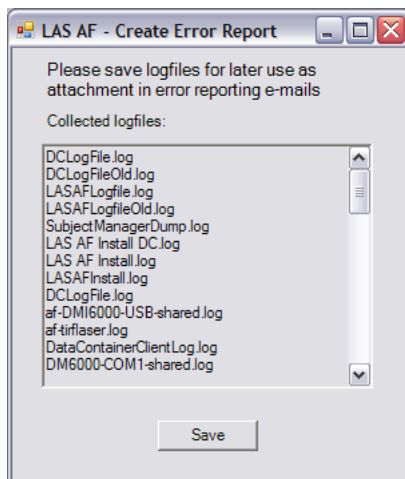
How to write an Errorlog on the SP5 system

In addition to leaving a remark in the log-sheet of the SP5 microscope, it is useful to store an errorlog on the harddisk of the SP5 computer. This errorlog will contain computer and SP5 hardware related information and can help the Leica staff to identify certain problems and to improve their software for future releases. Here you will find instructions how to generate errorlogs, which should be done if you experience any problem during work on the SP5 microscope.

- Start>All Programs>Leica LAS_AF>Create Error Report



- Save



- Rename it eg with the date of the day
- Store it under D:\Errorlogs
- Leave a remark on the log-sheet that you made one and/or notify the manager
- The biooptics manager will pass on the errorlog to the Leica service technician